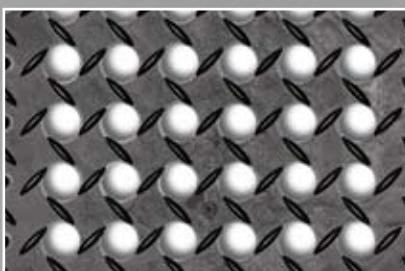


620 Diamond Flex-Lok™



- Sensational fatigue relief due to its unique “flex” design underneath.
- Available pre-assembled or as lose tiles for on-site installations.
- A permanent interlock system ensures that the mat will not come apart. No gluing required.
- Drainage system of round shaped holes of 22 mm diameter facilitates the removal of liquids and debris from the work area without clogging, keeping the surface clear.
- Anti-slip deck-plate surface design tested R10 according to DIN51130 and BG-rule BGR181.
- Resistant to synthetic/hydraulic oils, providing the answer to slips and falls in wet, oily and greasy industrial environments.
- Bevelled ramps are available, eliminating trip hazards and allowing for easy access on to and off of the mat surface. Yellow safety borders comply with OSHA Code 1910-144.
- Ergonomic benefit of 25 mm thickness worker platform.
- Free of toxic DOP and DMF.



620 Diamond Flex-Lok™

PRODUCT SPECIFICATIONS			
Designation	Industrial Matting		
Type	Anti-fatigue / anti-slip		
Description	Modular tiles, edges and corners. Duckboard, anti-slip deck-plate surface design, drainage system, permanent interlock system		
Material	PVC		
Process	Injection moulding		
Category	Best		
Recommended use	Heavy duty – Industrial environments, dry or wet areas		
Colours	Black, Yellow		
Weight	9.7 kg/m²		
Thickness	25 mm		
Standard sizes	76 cm x 152 cm, 107 cm x 152 cm, 107 cm x 183 cm Tiles : 30.48 cm x 30.48 cm Bevel : 15.24 cm x 30.48 cm Corners : 15.24 cm x 15.24 cm		
Custom sizes	Any dimension or shape, calculation basis per m²		
Special remarks			
PRODUCT TESTING			
Tests		Norms	Results
Compression deflection		U.S.	
	1.4 kg/cm²		
	2.8 kg/cm²		
Foam battery		ASTM D3574	40 lb/in²
Abrasion resistance		ASTM D3884-01	
	500 Cycles		
	1000 Cycles		
Static coefficient of friction		ASTM C1028-96	0.69
Elongation		ASTM D412	
Breaking load		ASTM D412	
Graves tear strength		ASTM D 1004	
Hardness		ASTM D2240-02	85 Shore A
Anti-slip		DIN 51130 and BG-RULE BGR181	R10
FIRE TESTING			
	Critical radiant flux	ASTM E-648	0.76 watts/cm²
	Fire retardancy	DIN4102	
		EN 13501-1	
	Flammability test	ASTM D2859	
ESD		ANSI ESD S7.1 50% Humidity	
Sustainability		<ul style="list-style-type: none">• Recyclable material• Reach Compliant (Registration, Evaluation, Authorization and Restriction of Chemicals)	

zu beziehen bei:
<https://arbeitsplatzmatten-profi.com>
Mail: info@arbeitsplatzmatten-profi.com
Tel.: 06359/9611906