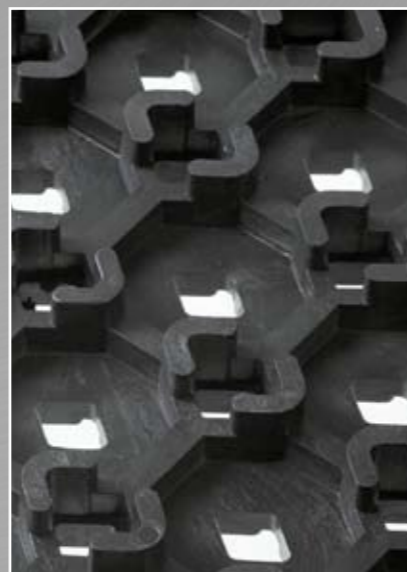
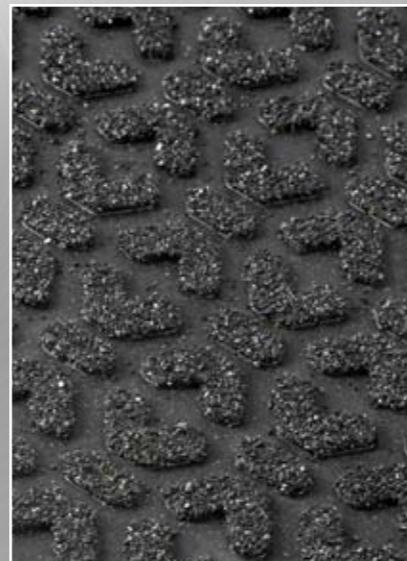


922 Cushion-Lok™ Heavy Duty Solid with Grip Step®



- Anti-slip surface designs for sure footing with Grip Step®, an extra safety layer for extremely slippery areas.
- Non-perforated version heavy duty mat, its reinforced structure is designed to withstand the heaviest load.
- Safety and comfort unite in this industrial strength anti-fatigue matting.
- Resistant to synthetic/hydraulic oils, providing the answer to slips and falls in wet, oily and greasy industrial environments.
- Fire classification Cfl-s2 tested according to DIN EN ISO 13501 and Class 1 according to NFPA Safety code 101 and IBC 804.2 classification. Testing method ASTM E648-03.
- Bevelled ramps are available, eliminating trip hazards and allowing for easy access on to and off of the mat surface. Yellow safety borders comply with OSHA Code 1910-144.
- Ergonomic benefit of 22,2 mm thickness worker platform.
- Custom built comes standard, in any shape or size mat.
- Free of toxic DOP and DMF.



922 Cushion-Lok™ Heavy Duty Solid with Grip Step®

PRODUCT SPECIFICATIONS			
Designation	Industrial Matting		
Type	Anti-fatigue / anti-slip		
Description	Modular tiles, edges and corners Duckboard, portholes and beveled yellow safety borders, reinforced structure, non perforated, with abrasive Grip Step® coating.		
Material	Polyvinyl Chloride		
Process	Injection moulding		
Category	Best		
Recommended use	Heavy duty – industrial environments, dry or wet areas – extremely slippery areas		
Colours	Black, Black / Yellow		
Weight	17 kg/m ²		
Thickness	22.2 mm		
Standard sizes	Tiles : 30.48 cm x 30.48 cm Bevel : 15.24 cm x 30.48 cm Corners : 15.24 cm x 15.24 cm		
Custom sizes	Any dimension or shape, calculation basis per m ² . Sketch is required for custom sizes		
Special remarks	Grip Step is an abrasive coating sprayed on the mat's top surface which provides 100% more slip resistance.		
PRODUCT TESTING			
Tests		Norms	Results
Compression deflection		U.S.	
	1.4 kg/cm ²		0.3 cm
	2.8 kg/cm ²		0.5 cm
Foam battery		ASTM D3574	
Abrasion resistance		ASTM D3884-01	
	500 Cycles		
	1000 Cycles		
Static coefficient of friction		ASTM C1028-96	0.80
Elongation		ASTM D412	
Breaking load		ASTM D412	
Graves tear strength		ASTM D 1004	
Hardness		ASTM D2240-02	79 Shore A
Anti-slip		DIN 51130 and BG-RULE BGR181	
FIRE TESTING			
	Critical radiant flux	ASTM E-648	0.50 watts / cm ²
	Fire retardancy	DIN EN 9239	Cfl - S2
	Flammability test	ASTM D2859	Pass
ESD		ANSI ESD S7.1 50% Humidity	
Sustainability		<ul style="list-style-type: none"> • Recyclable material • Reach Compliant (Registration, Evaluation, Authorization and Restriction of Chemicals) 	

zu beziehen bei:
<https://arbeitsplatzmatten-profi.com>
 Mail: info@arbeitsplatzmatten-profi.com
 Tel.: 06359/9611906