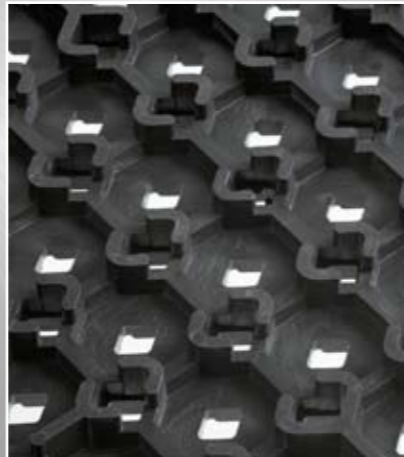
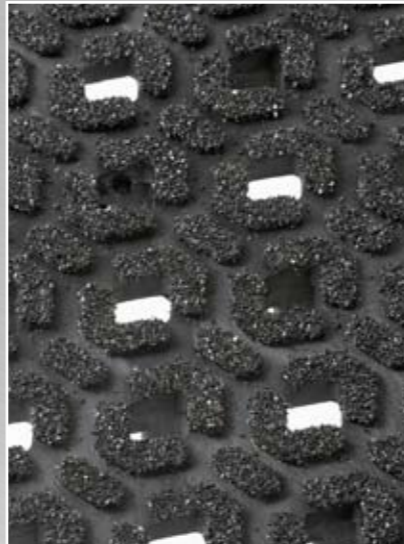


# 522 Cushion Lok™ Heavy Duty with Grip Step®



- Grip Step®, anti-slip surface design for sure footing with an extra safety layer for extremely slippery areas.
- The perforation facilitates drainage of spills.
- Safety and comfort unite in this industrial strength anti-fatigue matting.
- Resistant to synthetic/hydraulic oils, providing the answer to slips and falls in wet, oily and greasy industrial environments.
- Bevelled ramps are available, eliminating trip hazards and allowing for easy access on to and off of the mat surface. Yellow safety borders comply with OSHA Code 1910-144.
- Ergonomic benefit of 22,2 mm thickness worker platform.
- Reinforced structure, designed to withstand the heaviest loads.
- Custom built comes standard, in any shape or size mat.
- Free of toxic DOP and DMF.

# 522 Cushion Lok™ Heavy Duty with Grip Step®

PRODUCT SPECIFICATIONS	
Designation	Industrial Matting
Type	Anti-fatigue / anti-slip
Description	Modular tiles, edges and corners Duckboard, portholes and beveled yellow safety borders, reinforced structure, perforated, with abrasive Grip Step coating.
Material	Polyvinyl Chloride
Process	Injection moulding
Category	Best
Recommended use	Heavy duty – industrial environments, dry or wet areas – extremely slippery areas
Colours	Black, Black / Yellow
Weight	9.6 kg/m <sup>2</sup>
Thickness	22.2 mm
Standard sizes	76 cm x 152 cm 107 cm x 183 cm Tiles : 30.48 cm x 30.48 cm Bevel : 15.24 cm x 30.48 cm Corners : 15.24 cm x 15.24 cm
Custom sizes	Any dimension or shape, calculation basis per m <sup>2</sup> . Sketch is required for custom size.
Special remarks	Grip Step is an abrasive coating sprayed on the mat's top surface which provides 100% more slip resistance

PRODUCT TESTING		
Tests	Norms	Results
Compression deflection	U.S.	
	1.4 kg/cm <sup>2</sup>	0.46 cm
	2.8 kg/cm <sup>2</sup>	0.63 cm
Foam battery	ASTM D3574	
Abrasion resistance	ASTM D3884-01	
	500 Cycles	
	5000 Cycles	
Static coefficient of friction	ASTM C1028-96	0.87
Elongation	ASTM D412	
Breaking load	ASTM D412	
Graves tear strength	ASTM D 1004	
Hardness	ASTM D2240-02	
Anti-slip	DIN 51130 and BG-RULE BGR181	

FIRE TESTING			
	Critical radiant flux	ASTM E-648	0.44 watts/cm <sup>2</sup>
	Fire retardancy	DIN EN 9239	Cfl - S2
	Flammability test	ASTM D2859	Pass
ESD		ANSI ESD S7.1 50% Humidity	
Sustainability		<ul style="list-style-type: none"> <li>• Recyclable material</li> <li>• Reach Compliant (Registration, Evaluation, Authorization and Restriction of Chemicals)</li> </ul>	

zu beziehen bei:  
<https://arbeitsplatzmatten-profi.com>  
 Mail: [info@arbeitsplatzmatten-profi.com](mailto:info@arbeitsplatzmatten-profi.com)  
 Tel.: 06359/9611907